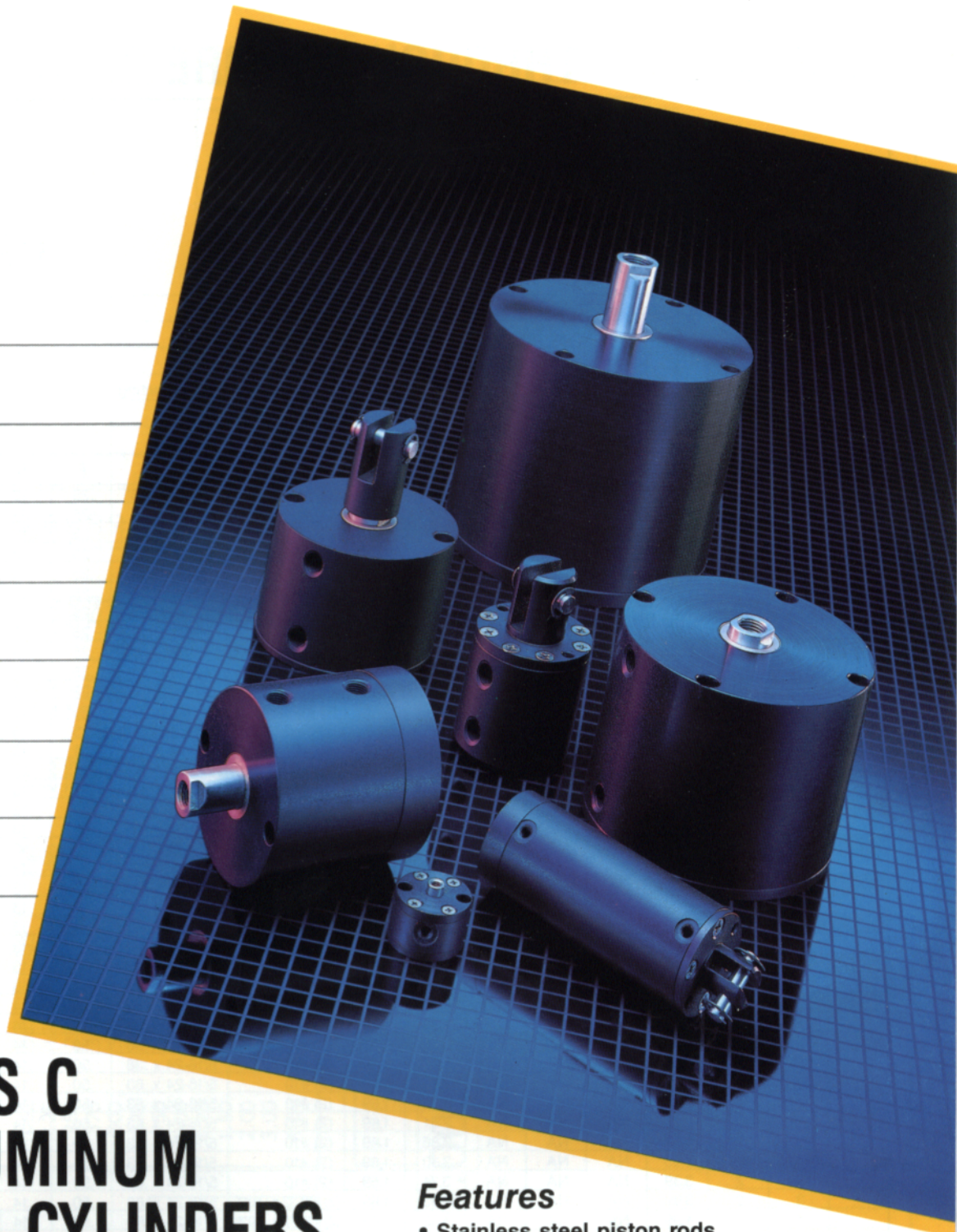




Specialist in Quality
Air Cylinders
and Components



NEW SERIES C ROUND ALUMINUM 150 PSI AIR CYLINDERS BORE SIZE 1/2" TO 4"

Features

- Stainless steel piston rods
- Bronze rod bushings
- BUNA N "O" rings
- Black anodized finish
- Bodies, covers & pistons of machined aluminum bar

Options:

- Non-rotating
- Viton seals
- Chrome piston rods
- Spring return/extend
- Bumpers
- Hard coat anodizing
- Hollow piston rods
- Engineered specials
- Double ended

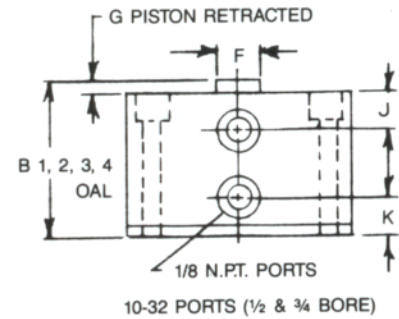
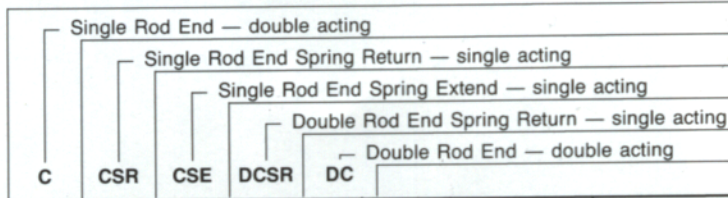
SERIES C 1/2" THROUGH 4" BORE SPECIFICATIONS

PORTS:

1/2" through 1 5/8" Bore ports are 90° to mounting holes.

2" Bore ports are 72° to mounting holes.

2 1/2", 3" & 4" Bore ports are 45° to mounting holes.

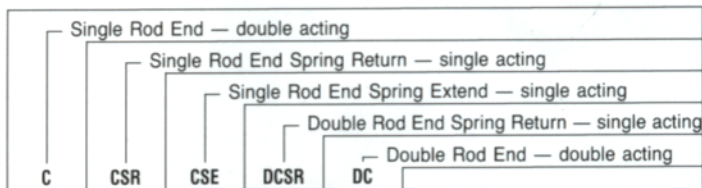
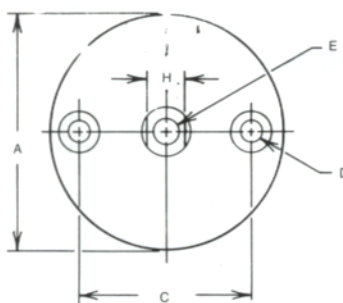


BORE	STROKE	A	B	B ₁	B ₂	B ₃	B ₄	C	D	E	F	G	H	J	K
1/2	1/16	1 1/8	*.83	.83	.89	1.00	*1.00	.88	(2) #6	#8-32 x .25	.25	.13	NA	.29	.28
	1/8	1 1/8	*.83	.96	1.03	1.13	*1.00	.88	(2) #6	#8-32 x .25	.25	.13	NA	.29	.28
	1/4	1 1/8	*.96	1.08	1.14	1.25	1.13	.88	(2) #6	#8-32 x .25	.25	.13	NA	.29	.28
	3/8	1 1/8	1.08	1.36	1.42	1.55	1.25	.88	(2) #6	#8-32 x .38	.25	.13	NA	.29	.28
	1/2	1 1/8	1.21	1.49	1.55	1.67	1.38	.88	(2) #6	#8-32 x .38	.25	.13	NA	.29	.28
	5/8	1 1/8	1.36	NA	NA	NA	1.50	.88	(2) #6	#8-32 x .38	.25	.13	NA	.29	.28
	3/4	1 1/8	1.49	NA	NA	NA	1.63	.88	(2) #6	#8-32 x .38	.25	.13	NA	.29	.28
	1	1 1/8	1.83	NA	NA	NA	1.88	.88	(2) #6-327/16**	#8-32 x .38	.25	.13	NA	.42	.28
	1 1/4	1 1/8	2.08	NA	NA	NA	2.13	.88	(2) #6-327/16**	#8-32 x .38	.25	.13	NA	.42	.28
	1 1/2	1 1/8	2.33	NA	NA	NA	2.38	.88	(2) #6-327/16**	#8-32 x .38	.25	.13	NA	.42	.28
3/4	1/16	1 1/2	*.83	.83	.89	1.00	*1.00	1.19	(2) #6	#10-32 x .25	.31	.13	NA	.29	.28
	1/8	1 1/2	*.83	.96	1.03	1.13	*1.00	1.19	(2) #6	#10-32 x .25	.31	.13	NA	.29	.28
	1/4	1 1/2	*.96	1.08	1.14	1.25	1.13	1.19	(2) #6	#10-32 x .25	.31	.13	NA	.29	.28
	3/8	1 1/2	1.08	1.36	1.42	1.55	1.25	1.19	(2) #6	#10-32 x .38	.31	.13	NA	.29	.28
	1/2	1 1/2	1.21	1.49	1.55	1.67	1.38	1.19	(2) #6	#10-32 x .38	.31	.13	NA	.29	.28
	5/8	1 1/2	1.36	NA	NA	NA	1.50	1.19	(2) #6	#10-32 x .38	.31	.13	NA	.29	.28
	3/4	1 1/2	1.49	NA	NA	NA	1.63	1.19	(2) #6	#10-32 x .38	.31	.13	NA	.29	.28
	1	1 1/2	1.83	NA	NA	NA	1.88	1.19	(2) #8-32 x .437**	#10-32 x .38	.31	.13	NA	.42	.28
	1 1/4	1 1/2	2.08	NA	NA	NA	2.13	1.19	(2) #8-32 x .437**	#10-32 x .38	.31	.13	NA	.42	.28
	1 1/2	1 1/2	2.33	NA	NA	NA	2.38	1.19	(2) #8-32 x .437**	#10-32 x .38	.31	.13	NA	.42	.28
1 1/8	1/16	2	1.02	1.02	1.27	1.36	1.36	1.69	(2) #10	5/16-24 x .38	.50	.14	.44	.37	.50
	1/8	2	1.02	1.02	1.27	1.36	1.36	1.69	(2) #10	5/16-24 x .38	.50	.14	.44	.37	.50
	1/4	2	1.02	1.02	1.27	1.36	1.36	1.69	(2) #10	5/16-24 x .38	.50	.14	.44	.37	.50
	3/8	2	1.33	1.33	1.58	1.67	1.67	1.69	(2) #10	5/16-24 x .38	.50	.14	.44	.37	.50
	1/2	2	1.77	NA	NA	NA	2.11	1.69	(2) #10	5/16-24 x .63	.50	.14	.44	.37	.50
	3/4	2	2.02	NA	NA	NA	2.36	1.69	(2) #10	5/16-24 x .63	.50	.14	.44	.37	.50
	1	2	2.27	NA	NA	NA	2.61	1.69	(2) #10	5/16-24 x .63	.50	.14	.44	.37	.50
	1 1/4	2	2.52	NA	NA	NA	2.86	1.69	(2) #10	5/16-24 x .63	.50	.14	.44	.37	.50
	1 1/2	2	2.95	NA	NA	NA	3.30	1.69	(2) #10	5/16-24 x .63	.50	.14	.44	.37	.50
	2	2	3.39	NA	NA	NA	3.74	1.69	(2) #10	5/16-24 x .63	.50	.14	.44	.37	.50
1 5/8	1/16	2 3/4	1.14	1.14	1.52	1.61	1.61	2.38	(2) #10	3/8-24 x .38	.62	.14	.50	.37	.50
	1/8	2 3/4	1.14	1.14	1.52	1.61	1.61	2.38	(2) #10	3/8-24 x .38	.62	.14	.50	.37	.50
	1/4	2 3/4	1.27	1.27	1.64	1.74	1.74	2.38	(2) #10	3/8-24 x .44	.62	.14	.50	.37	.50
	3/8	2 3/4	1.77	1.77	2.14	2.24	2.24	2.38	(2) #10	3/8-24 x .63	.62	.14	.50	.37	.50
	1/2	2 3/4	2.02	2.02	2.39	2.49	2.49	2.38	(2) #10	3/8-24 x .63	.62	.14	.50	.37	.50
	3/4	2 3/4	2.33	2.33	2.83	2.80	2.80	2.38	(2) #10	3/8-24 x .75	.62	.14	.50	.37	.50
	1	2 3/4	2.83	NA	NA	NA	3.30	2.38	(2) #10	3/8-24 x .75	.62	.14	.50	.37	.50
	1 1/4	2 3/4	3.33	NA	NA	NA	3.80	2.38	(2) #10	3/8-24 x .75	.62	.14	.50	.37	.50
	1 1/2	2 3/4	4.33	NA	NA	NA	4.80	2.38	(2) #10	3/8-24 x .75	.62	.14	.50	.37	.50
	2	2 3/4	5.33	NA	NA	NA	5.80	2.38	(2) #10	3/8-24 x .75	.62	.14	.50	.37	.50
2	1/8	3 1/4	1.20	1.20	1.58	1.83	1.83	2.81	(2) .25	1/2-20 x .40	.75	.14	.63	.37	.50
	1/4	3 1/4	1.33	1.33	1.70	1.95	1.95	2.81	(2) .25	1/2-20 x .50	.75	.14	.63	.37	.50
	3/8	3 1/4	1.45	1.45	1.83	2.08	2.08	2.81	(2) .25	1/2-20 x .63	.75	.14	.63	.37	.50
	1/2	3 1/4	1.64	1.64	2.02	2.27	2.27	2.81	(2) .25	1/2-20 x .63	.75	.14	.63	.37	.50
	3/4	3 1/4	2.02	2.02	2.39	2.64	2.64	2.81	(2) .25	1/2-20 x .75	.75	.14	.63	.37	.50
	1	3 1/4	2.39	2.39	2.89	3.02	3.02	2.81	(2) .25	1/2-20 x .88	.75	.14	.63	.37	.50
	1 1/2	3 1/4	2.89	NA	NA	NA	3.52	2.81	(2) .25	1/2-20 x .88	.75	.14	.63	.37	.50
	2	3 1/4	3.39	NA	NA	NA	4.02	2.81	(2) .25	1/2-20 x .88	.75	.14	.63	.37	.50
	3	3 1/4	4.39	NA	NA	NA	5.02	2.81	(2) .25	1/2-20 x .88	.75	.14	.63	.37	.50
	4	3 1/4	5.39	NA	NA	NA	6.02	2.81	(2) .25	1/2-20 x .88	.75	.14	.63	.37	.50

*Ported on opposite sides; all other ported same side **DD tapped mounting holes at both ends.

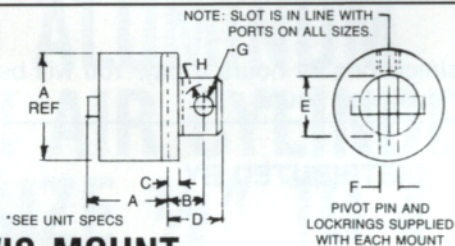
STANDARD REPAIR KITS

Contains Buna-N rod seal, piston seal and cover seal.
Please specify bore and style of unit to be repaired.
Viton seals available on request.



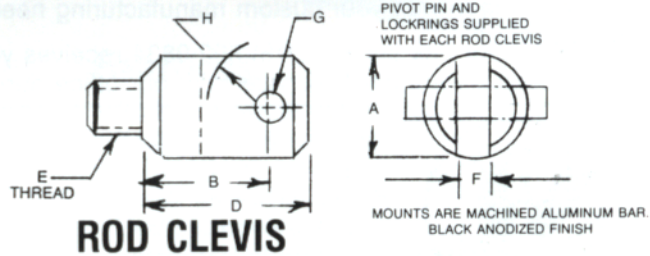
BORE	STROKE	A	B	B ₁	B ₂	B ₃	B ₄	C	D	E	F	G	H	J	K
2 1/2	*1/8	3 3/4	1.45	1.45	1.89	2.02	2.02	3.25	(4) .25	1/2-20 x .56	.75	.14	.63	.37	.56
	*1/4	3 3/4	1.58	1.58	2.02	2.14	2.14	3.25	(4) .25	1/2-20 x .63	.75	.14	.63	.37	.56
	1/2	3 3/4	1.83	1.83	2.27	2.39	2.39	3.25	(4) .25	1/2-20 x .63	.75	.14	.63	.37	.56
	3/4	3 3/4	2.20	2.20	2.64	2.77	2.77	3.25	(4) .25	1/2-20 x .88	.75	.14	.63	.37	.56
	1	3 3/4	2.33	2.33	2.77	2.89	2.89	3.25	(4) .25	1/2-20 x .88	.75	.14	.63	.37	.56
3	1 1/2	3 3/4	2.83	NA	NA	NA	3.39	3.25	(4) .25	1/2-20 x .88	.75	.14	.63	.37	.56
	2	3 3/4	3.33	NA	NA	NA	3.89	3.25	(4) .25	1/2-20 x .88	.75	.14	.63	.37	.56
	3	3 3/4	4.33	NA	NA	NA	4.89	3.25	(4) .25	1/2-20 x .88	.75	.14	.63	.37	.56
	4	3 3/4	5.33	NA	NA	NA	5.89	3.25	(4) .25	1/2-20 x .88	.75	.14	.63	.37	.56
	*1/8	4 1/4	1.52	1.52	1.95	2.08	2.08	3.81	(4) .25	1/2-20 x .63	.75	.14	.63	.37	.56
3	*1/4	4 1/4	1.64	1.64	2.08	2.20	2.20	3.81	(4) .25	1/2-20 x .63	.75	.14	.63	.37	.56
	1/2	4 1/4	1.89	1.89	2.33	2.45	2.45	3.81	(4) .25	1/2-20 x .63	.75	.14	.63	.37	.56
	3/4	4 1/4	2.14	2.14	2.58	2.70	2.70	3.81	(4) .25	1/2-20 x .88	.75	.14	.63	.37	.56
	1	4 1/4	2.39	2.39	2.83	2.95	2.95	3.81	(4) .25	1/2-20 x .88	.75	.14	.63	.37	.56
	1 1/2	4 1/4	2.89	NA	NA	NA	3.45	3.81	(4) .25	1/2-20 x .88	.75	.14	.63	.37	.56
4	2	4 1/4	3.39	NA	NA	NA	3.95	3.81	(4) .25	1/2-20 x .88	.75	.14	.63	.37	.56
	3	4 1/4	4.39	NA	NA	NA	4.95	3.81	(4) .25	1/2-20 x .88	.75	.14	.63	.37	.56
	4	4 1/4	5.39	NA	NA	NA	5.95	3.81	(4) .25	1/2-20 x .88	.75	.14	.63	.37	.56
	*1/8	5 1/2	1.89	NA	NA	NA	2.33	5.0	(4) .25	5/8-18 x .88	.88	.20	.75	.37	.68
	1/4	5 1/2	2.02	NA	NA	NA	2.45	5.0	(4) .25	5/8-18 x .88	.88	.20	.75	.37	.68
4	1/2	5 1/2	2.27	NA	NA	NA	2.70	5.0	(4) .25	5/8-18 x .88	.88	.20	.75	.37	.68
	1	5 1/2	2.77	NA	NA	NA	3.20	5.0	(4) .25	5/8-18 x .88	.88	.20	.75	.37	.68
	1 1/2	5 1/2	3.27	NA	NA	NA	3.70	5.0	(4) .25	5/8-18 x .88	.88	.20	.75	.37	.68
	2	5 1/2	3.77	NA	NA	NA	4.20	5.0	(4) .25	5/8-18 x .88	.88	.20	.75	.37	.68
	3	5 1/2	4.77	NA	NA	NA	5.20	5.0	(4) .25	5/8-18 x .88	.88	.20	.75	.37	.68
4	5 1/2	5.77	NA	NA	NA	6.20	5.0	(4) .25	5/8-18 x .88	.88	.20	.75	.37	.68	

SERIES C 1/2" THROUGH 4" BORE MOUNTS



CLEVIS MOUNT

BORE	A DIA.	B	C	D	E	F	G	H
1/2	1.13	.44	0	.69	.63	.25	.25	.41
3/4	1.50	.44	0	.69	.63	.25	.25	.41
1 1/8	2.00	.81	.06	1.19	1.00	.31	.31	.69
1 5/8	2.74	.88	.13	1.25	1.25	.38	.38	.69
2	3.24	.88	.13	1.25	1.25	.38	.38	.69
2 1/2	3.74	1.19	.19	1.69	1.63	.50	.50	.97
3	4.24	1.19	.19	1.69	1.63	.50	.50	.97
4	5.50	1.44	.19	2.06	2.00	.63	.63	1.22



ROD CLEVIS

BORE	A DIA.	B	D	E	F	G	H
1/2	.50		1.00	8-32	.19	.19	.38
3/4	.50		1.00	-32	.19	.19	.38
1 1/8	.75	.88	1.25	5/16-24	.25	.25	.50
1 5/8	1.00	1.25	1.63	3/8-24	.32	.31	.63
2	1.00	1.31	1.69	1/2-20	.32	.31	.63
2 1/2	1.00	1.31	1.69	1/2-20	.32	.31	.63
3	1.00	1.31	1.69	1/2-20	.32	.31	.63
4	1.38	1.63	2.13	5/8-18	.50	.50	.94

ORDERING INFORMATION

Please specify bore size and stroke when ordering. The following Springville abbreviations will assist you in ordering.

PREFIX DESIGNATION

C – single rod end - double acting
DC – double rod end – double acting
CSR – single rod end – spring return
– single acting
CSE – single rod end – spring extend
– single acting
DCSR – double rod end – spring return
– single acting

SUFFIX DESIGNATION

V – Viton seals
CM & P – clevis mount and pin
RC & P – rod clevis & pin

EXAMPLE

DC	1-1/8	X	3/4	—	CM&P	V
series	bore		stroke		clevis mount	viton seals

NOTES:

WARRANTY: Please see our industry-leading THREE YEAR LIMITED WARRANTY document.

RETURNED GOODS: All returns must be authorized by Springville Mfg. Co., Inc. Returns must be shipped prepaid, and are subject to a restocking charge. Approval will only be given for unused goods which are stock items.

PRODUCT ENHANCEMENTS: Our continuing product improvement effort may require changes in specifications without notice. This does not affect our interchangeability feature.

PRODUCT LISTING:

SERIES "I" 250 PSI Aluminum Square Head Cylinders 1¼" through 5" bore
SERIES "M" 250 PSI Aluminum Square Head Cylinders 6" and 8" bore
SERIES "A" 250 PSI Aluminum Square Head Air Oil Tank 1¾" through 8" bore
SERIES "C" 150 PSI Round Aluminum Short Stroke Cylinders ½" through 4" bore

CUSTOM SERVICE: Springville Mfg. Co., Inc. is a full-line, precision machine shop with engineering and production capabilities for special designs and requirements. Contact us for assistance with your custom manufacturing needs.

FAX: Our Fax service (716) 592-9834 receives your communications 24 hours a day. You will be provided with timely service from our office during regular business hours.



DISTRIBUTED BY

Springville Mfg. Co., Inc.
Specialists in Quality Air Cylinders
and Components
P.O. Box 367
8798 North Street
Springville, New York 14141
Phone: (716) 592-4957
FAX: (716) 592-9834