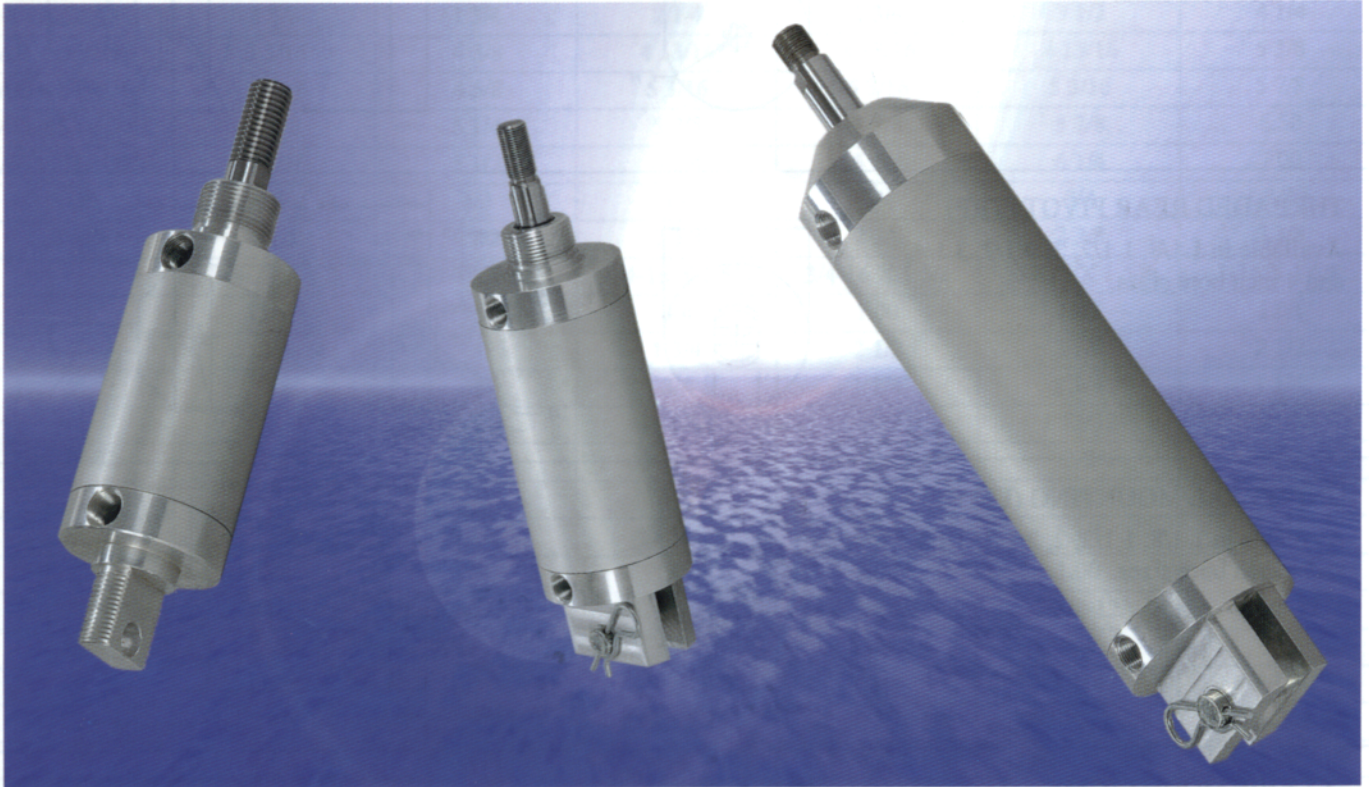


Springville SILVER BULLET™



SB SERIES CYLINDERS 1 1/8" THRU 4" BORES

FEATURES

- Clean Non-Tie Rod Design
- "Repairable" Cylinder Design
- High Tensile Aluminum Heads
- Temperature Range -40° to 250° F
- Self Lubricating Bronze Bushings
- Rod Wiper Cleans the Rod & Protects the Seal
- 150 PSI Rating
- Fractional Strokes
- Hard Chrome Piston Rod
- U-Cup Rod Seals
- Teflon Glide Piston Seal
- Hard Coated Aluminum Tube

OPTIONS

- Bumpers
- Cushions
- Stop Tubes
- Special Rod Ends and Threads
- Viton High Temperature Seals -20° to 400° F
- Oil Service
- U-Cup Piston Seals
- Magnetic Pistons
- Stainless Rods
- Reed and Hall Switches



Established 1958 - Specialists in Quality Air Cylinders and Components

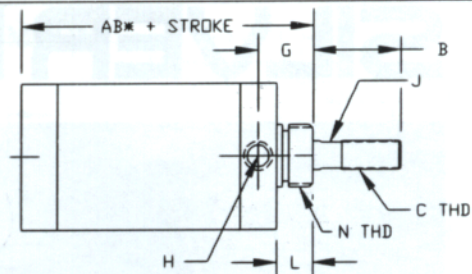
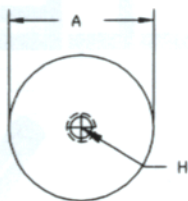
P. O. Box 367, Springville NY, 14141 • (716) 592-4957 • Fax: (716) 592-9834 • E-Mail: Sales@springvillemfg.com

SB-0601

MOUNTING STYLES

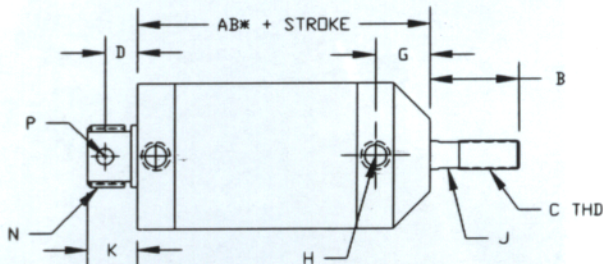
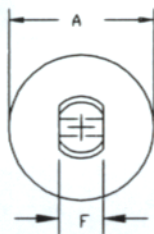
THREADED NOSE MOUNT (TNM)

Available in 1 1/8, 1 1/2, 2, 2 1/2, 3 1/4, and 4 inch bore sizes.



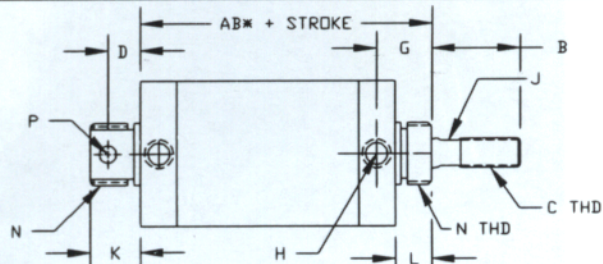
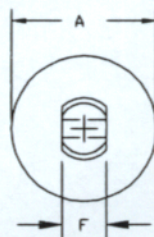
THREADED REAR PIVOT (TRP)

Available in 1 1/8, 1 1/2, 2, 2 1/2, 3 1/4, and 4 inch bore sizes.



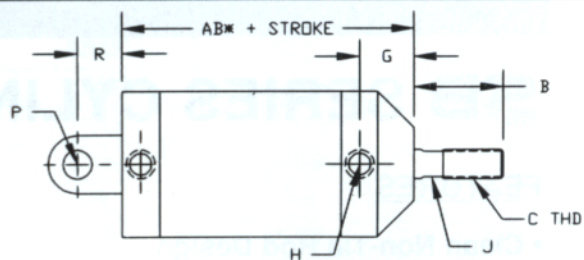
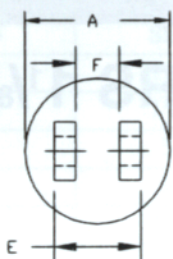
UNIVERSAL MOUNTING (UM)

Available in 1 1/8, 1 1/2, 2, 2 1/2, 3 1/4, and 4 inch bore sizes.



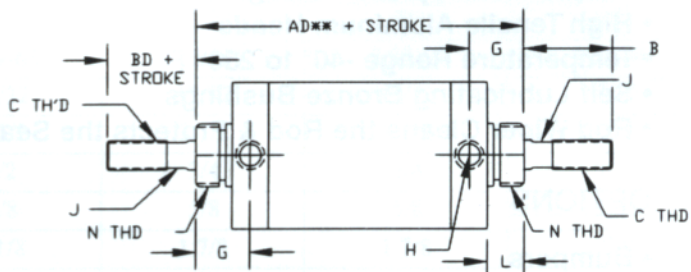
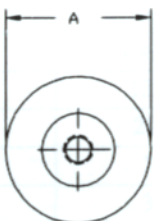
CLEVIS MOUNT (CM)

Available in 1 1/8, 1 1/2, 2, 2 1/2, 3 1/4, and 4 inch bore sizes.



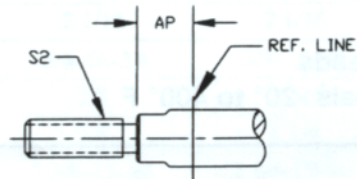
DOUBLE ROD END (DR)

Available in 1 1/8, 1 1/2, 2, 2 1/2, 3 1/4, and 4 inch bore sizes.

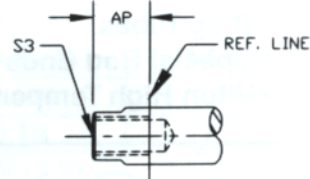


ROD ENDS: STYLE #2, STYLE #3

Available in 1 1/8, 1 1/2, 2, 2 1/2, 3 1/4, and 4 inch bore sizes.



STYLE #2



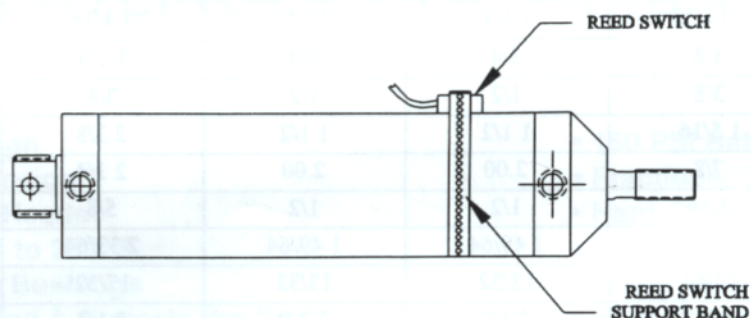
STYLE #3

*PISTON WITH GLIDE SEAL ADDER, FOR U-CUP PISTON ADDER USE AC
 **PISTON WITH GLIDE SEAL ADDER, FOR U-CUP PISTON ADDER USE AE

SILVER BULLET DIMENSIONS

Bore Dia.	1 1/8	1 1/2	2.00	2 1/2	3 1/4	4.00
Model No.	SB12	SB15	SB20	SB25	SB32	SB40
Rod Dia.	3/8	5/8	3/4	3/4	3/4	1.00
A DIA.	1 3/8	1 3/4	2 1/4	2 3/4	3 1/2	4 1/4
AB + STROKE	3 3/16	4 3/8	4 13/16	4 13/16	4 13/16	5 3/8
AC + STROKE	3 7/16	4 5/8	5 3/16	5 3/16	5 3/16	5 7/8
AD + STROKE	3 7/8	5 1/4	5 7/8	5 7/8	5 7/8	6.50
AE + STROKE	4 1/16	5 1/2	6 1/4	6 1/4	6 1/4	7.00
AP	1/2	1/2	3/4	3/4	3/4	3/4
B/BD	1 1/2	1 1/2	2 3/8	2 3/8	2 3/8	2 3/8
C	3/8-24 X 1.0	5/8-18 X 1.0	3/4-16 X 1 5/8	3/4-16 X 1 5/8	3/4-16 X 1 5/8	1-14 X 1 5/8
D	11/16	3/4	3/4	1.00	1.00	1.00
E	3/4	1 9/16	1 3/4	2 1/2	2 1/2	2 1/2
F	3/8	3/4	3/4	1 1/4	1 1/4	1 1/4
G	57/64	1 13/64	1 13/32	1 13/32	1 13/32	1 21/32
H (NPT)	1/8	1/4	1/4	1/4	3/8	3/8
J	5/16	1/2	5/8	5/8	5/8	7/8
K	1.00	1 1/4	1 1/4	1 3/4	1 3/4	1 3/4
L	5/8	7/8	1.00	1.00	1.00	1 3/16
N	3/4-16	1 1/8-12	1 3/8-12	1 3/8-12	1 3/8-12	1 3/4-12
P	3/8	1/2	1/2	3/4	3/4	3/4
R	11/16	3/4	3/4	1 1/4	1 1/4	1 1/4
S2	1/4-28 X 1.0	3/8-24 X 1.0	1/2-20 X 1 5/8	1/2-20 X 1 5/8	1/2-20 X 1 5/8	3/4-16 X 1 5/8
S3	1/4-28 X 1/2	3/8-24 X 3/4	1/2-20 X 1 1/8	1/2-20 X 1 1/8	1/2-20 X 1 1/8	3/4-16 X 1 1/8

REED OR HALL SWITCHES

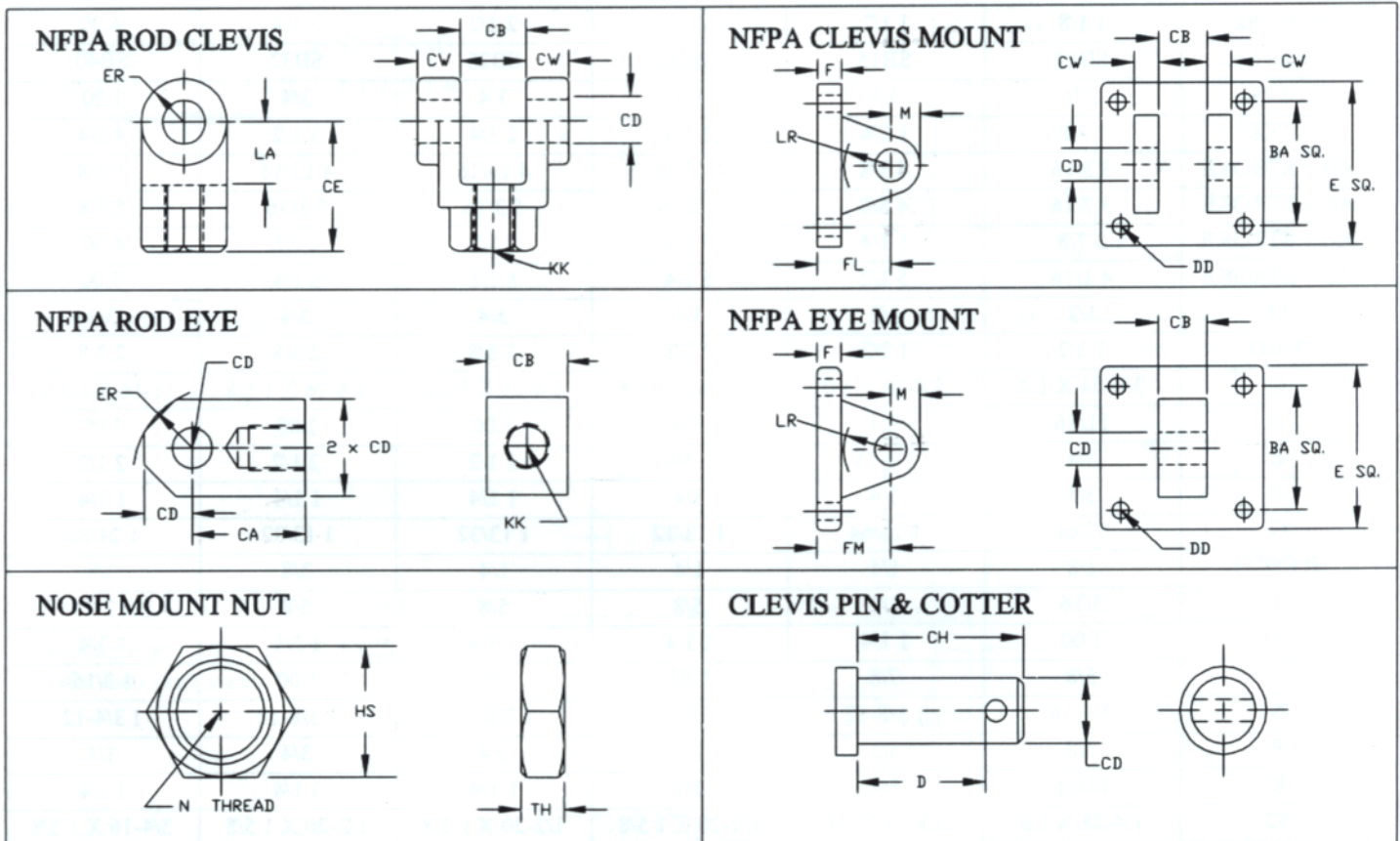


Switch Dimensions:
59/64 X 1.0 X 7/16
9' Lead Wire

Switch Information

Part Number	Description	Function	Switch Voltage	Switch Current	Switch Power	Switch Speed	Max. Volt. Drop	Sensitivity Orientation
822-000-001	Reed Switch	SPST Normally Open	0-120 VDC/AC 50/60 Hz	0.5 AMP max.	10 WATTS max.	0.5ms Operate 0.1ms Release	0 Volts	85 Gruass Parallel
822-000-004	Reed Switch MOV, LED	SPST Normally Open	0-120 VDC/AC 50/60 Hz	0.5 AMP max. 0.005 AMP min.	10 WATTS max.	0.5ms Operate 0.1ms Release	3.5 Volts	85 Gruass Parallel
822-000-031	Hall Effect LED, Sourcing	Normally Open PNP Output	6-24 VDC	0.5 AMP max.	10 WATTS max.	1.5µs Operate 0.1µs Release	0.5 Volts	85 Gruass Parallel
822-000-032	Hall Effect LED, Sinking	Normally Open NPN Output	6-24 VDC	0.5 AMP max.	10 WATTS max.	1.5µs Operate 0.1µs Release	0.5 Volts	85 Gruass Parallel

MOUNTS AND ACCESSORIES



Bore Dia.	1 1/8	1 1/2	2.00	2 1/2	3 1/4	4.00
Model No.	SB12	SB15	SB20	SB25	SB32	SB40
BA	1 1/8	1 5/8	1 5/8	2 9/16	2 9/16	2 9/16
CA	1 11/32	1 1/2	1 1/2	2 1/16	2 1/16	2 1/16
CB	3/8	3/4	3/4	1 1/4	1 1/4	1 1/4
CD	3/8	1/2	1/2	3/4	3/4	3/4
CE	1 5/16	1 1/2	1 1/2	2 3/8	2 3/8	2 3/8
CH	7/8	2.00	2.00	2 3/4	2 3/4	2 3/4
CW	3/16	1/2	1/2	5/8	5/8	5/8
D	3/4	1 49/64	1 49/64	2 33/64	2 33/64	2 33/64
DD	13/64	13/32	13/32	17/32	17/32	17/32
E	1 1/2	2 1/2	2 1/2	3 1/2	3 1/2	3 1/2
ER	1/2	1/2	1/2	3/4	3/4	3/4
F	5/16	3/8	3/8	5/8	5/8	5/8
FL	1.00	1 1/8	1 1/8	1 7/8	1 7/8	1 7/8
FM	1.00	1 1/8	1 1/8	1 7/8	1 7/8	1 7/8
HS	1 3/16	1 11/16	2 1/16	2 1/16	2 1/16	2 5/8
KK	3/8-24-2B	5/8-18-2B	5/8-18-2B	3/4-16-2B	3/4-16-2B	1-14-2B
LR	9/16	1/2	1/2	1 1/16	1 1/16	1 1/16
LA	1/2	3/4	3/4	1 1/4	1 1/4	1 1/4
N	3/4-16-2B	1 1/8-12-2B	1 3/8-12-2B	1 3/8-12-2B	1 3/8-12-2B	1 3/4-12-2B
M	15/32	1/2	1/2	3/4	3/4	3/4
TH	13/32	39/64	25/32	25/32	25/32	31/32